




RITMO
space arranged



The background of the entire page is a close-up, high-contrast photograph of an industrial welding process. A metal torch or nozzle is positioned at an angle, directing a bright, intense flame or laser beam onto a metal surface. This creates a brilliant point of contact where a large volume of bright orange and yellow sparks is being ejected. The sparks are captured in motion, creating a dense, fan-like spray that extends towards the bottom left. The surrounding metal components of the machinery are dark and metallic, with some reflective surfaces catching the ambient light. The overall color palette is dominated by the deep blues and greys of the machinery, contrasted sharply with the fiery oranges and yellows of the welding process.

Contemporary design, quality, functional features and a soft spot for tradition are the features which best describe NOMET products. We have been operating as a reliable supplier within the furniture industry and earning the trust of our customers since 1981. The people behind NOMET are the key to our success. We design, build, create and deliver our products by ourselves. Care for people, the environment and the planet are present through our entire production process. We create for you – guided by passion for beauty and the need to create practical and comfortable spaces.



A full-page background image showing two runners from behind, jogging on a path covered in fallen autumn leaves. The path is flanked by trees on the left and a wooden fence on the right. The scene is misty and bathed in a warm, golden light, suggesting early morning.

06:10 morning rituals

You go for a run, watch the day awaken; you are waking up with it. You love those moments, after a morning workout, you are ready to face the challenges the day will bring. You know that everything you will need – clothes, various accessories- are prepared and waiting perfectly arranged. They are waiting patiently for your morning rituals to come to an end.



Drawers inside a wardrobe? An extremely practical solution! They allow the space for accessories and extras to be organised in a way that keeps things tidy, but still guarantees easy access whenever you desire.








rails and top shelves

You can configure the upper elements of a RITMO system to ensure easy access to your clothes safely hanging on rails. The RITMO system makes it possible to attach rails at heights which maximise your storage and accessibility.

Shelves above rails are perfect for storing items which you don't use as often. Even larger items. We recommend glass shelves as you can take a sneaky look from the bottom at what is stored up there.

A black and white photograph of a man in a dark suit, sitting on a chair. He is looking down at his left wrist, which has a watch. The background is dark and textured, possibly a wall or a curtain. The lighting is dramatic, highlighting the man's face and the texture of his suit.

07:45 into the urban jungle

We know – you are a shark. You like it when lots of things are happening around you. And you simply cannot wait for today's hunt to begin. However, you are a shark with style. You emerge from your hiding place well prepared, because you have a place where everything you need for the day is waiting for you – perfectly arranged. Go ahead – the ocean beckons...





different options,
one system


Flexible RITMO wardrobe solutions are perfect for shaping your ideal space. Regardless of whether you are looking for a way to store shoes, shirts and jackets, fashionable accessories or trousers – everything will be at hand.

The plethora of options and the modular design of these products means that your needs and expectations will be satisfied.



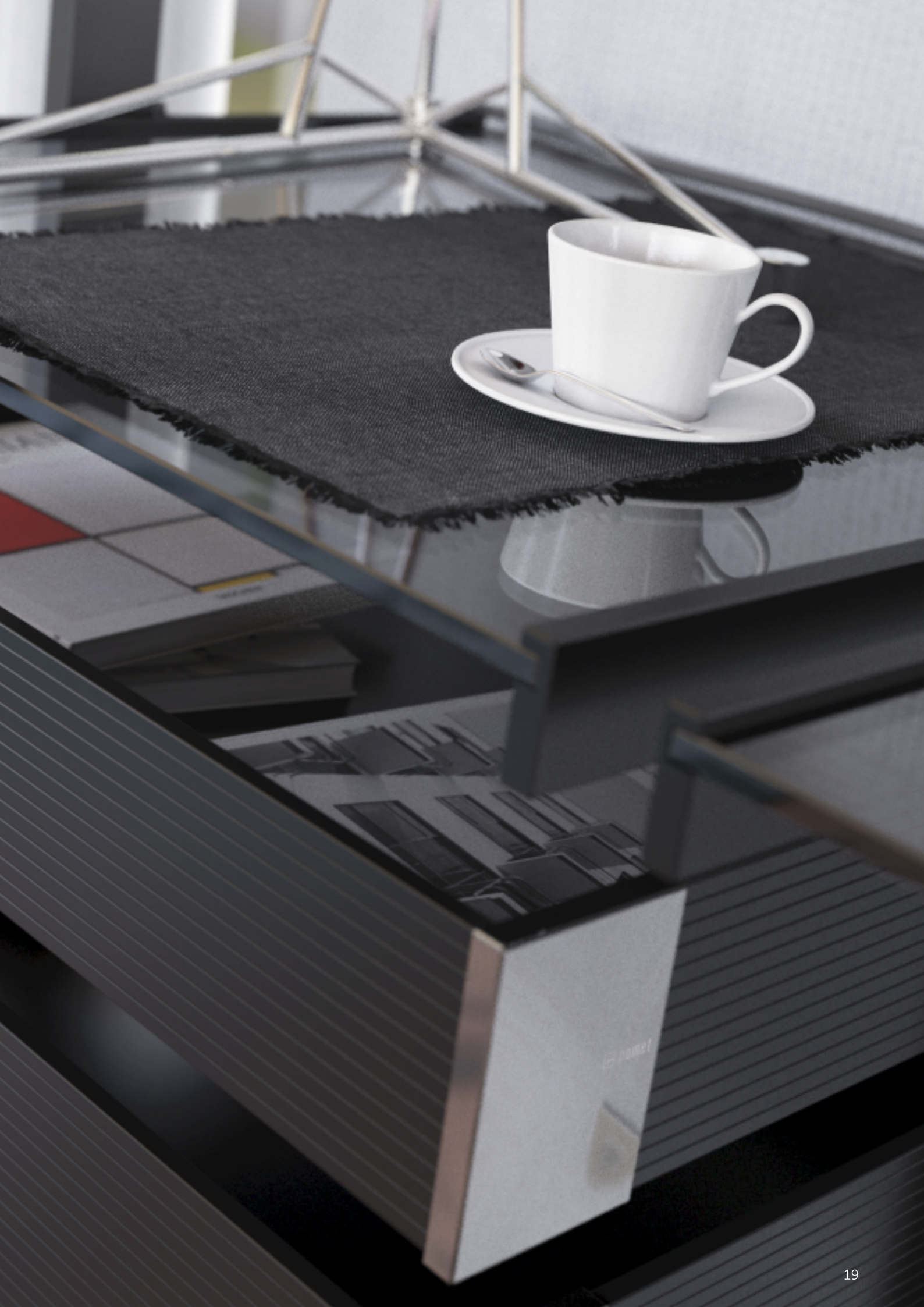
on hangers

RITMO trouser hanger is a solution which helps keep clothes in order and preserve their appearance. You can also use it to store other items of clothing – perfect for hanging t-shirts or jumpers. The fact that it stylistically matches the other products is also noteworthy – it is clear that the hanger is from the same family as the shelves you are attaching next to it.

A person with long, wavy brown hair is shown from the side, sitting at a wooden desk and typing on a black laptop. The background is a soft, out-of-focus grey. The text is overlaid on the right side of the image.

13:00 my home office

Your kingdom. This is where you run the entire world from, and the entire world is within your reach. You are spontaneous. However, at work certainty and security are what you enjoy. You value durability, stability and predictability. And that is why you feel so at home within your office. Well, it is a home office....



Home office modules of the RITMO collection include a countertop designed for convenience whilst working on a laptop with additional space for all those office items. Regardless of the size of your office, you will always be able to arrange it well, with space on drawers and on an additional side countertop. Shelves above the countertop make such an arrangement even more practical – with plenty of storage space within easy reach.







the perfect space

Do you like working from home? Or do you only do it because you have no other choice? We don't know. But we do know that a well arranged home office is important in both situations. That is why when designing the RITMO system we created products ideal for a home office. Robust and durable whilst visually light and delicate. A solution which will help your entrepreneurship and productivity soar.

Just as in all the other RITMO elements, you can install modules in different positions so that the heights of the countertop and shelves match your individual needs.



16:15 back home walking?

You like your job. You feel good there. Nonetheless, knowing that the intensive part of your day will come to an end and that you will be able to indulge in little pleasures is heart-warming. You are looking forward to walking back home. It is a bit of a way. However, a breath of fresh air makes you forget the day's difficult and dreary moments. A bit of exercise does wonders for stress and irritation. And it really does not matter that it just started raining...



Raincoats and long jackets can be conveniently and easily kept on RITMO clothes rails. You can also install an additional rail halfway up the frame – this will give you ample space for jumpers, shirts and other similarly short clothing items. Short enough for two rows of clothes to fit inside a single frame.







all cases considered

RITMO will handle all architectural challenges posed by your interiors. Meticulously selected module dimensions, wide scope for configuring them as well as flexibility in attaching elements at various heights means your requirements will be fabulously catered for.



17:45 after hours

You are a child of passion. And when you are passionate about something – that's when you live life to the full. And you want all the things you need to pursue your passion at hand. In a safe place, yet visible. Because you don't only live your passion. You are proud of it!



An open and visually light RITMO elements are perfect for a loft type living room. Streamlined and simple shapes, purity of noble materials accentuated by meticulous workmanship and precise assembly of components – this is the DNA of the design, that will be at home in most contemporary living room scenarios.








front's texture

Intriguing and accurate – the finely ribbed profiled drawer faces, and inner elements underline the unusual character and visual uniqueness of RITMO. Thanks to the unusual design, all the pull-out elements look as if they are suspended in air, which further enhances the impression of compositional lightness.

A person's silhouette is visible in the foreground, looking out a window. The background shows a bright sunset or sunrise with warm, golden light streaming through the window, creating a soft, hazy atmosphere. The person's profile is dark against the bright light.

20:15 dating out together

We live together, but separately? That's what it is like in a household where everyone is run off their feet. Sometimes we find time for one another in the evening. We make plans to go out, choose the right clothes and accessories. And then wait for a pleasant evening. One where conversation flows, and you tell one another about the time spent apart. What brings you closer together again.



Shelves or rails for longer clothes? Well, let the clothes you have be the deciding factor. That's why it is worth reaching for RITMO when thinking of a built-in wardrobe. Using elements of this system you will accurately arrange the wardrobe to match the volume and nature of your clothes. Whereas creating a dedicated zone for each person using the wardrobe will result in a trouble- and conflict-free storage space.








glass drawers

Graphite tempered glass of the drawer faces, and bodies gives an impression of visual depth; its translucent darkish shade and reflections add mystery to the interior. For such a setup, we recommend installing laminated shelves covering the drawers from above. Items in the drawers visible through the face and sides are easily identifiable but hidden at the same time – they keep chaos at bay.



23.45
another busy day
tomorrow...

It is getting dark. The busy day is drawing to a close. A sure sign that it is time to relax. With the knowledge that all your things will stay in their places. Waiting patiently for another fascinating day. Just as you are. And you know that they will be just as ready as you in the morning.

You will not need to waste time looking for things.

Sounds like bliss – goodnight...





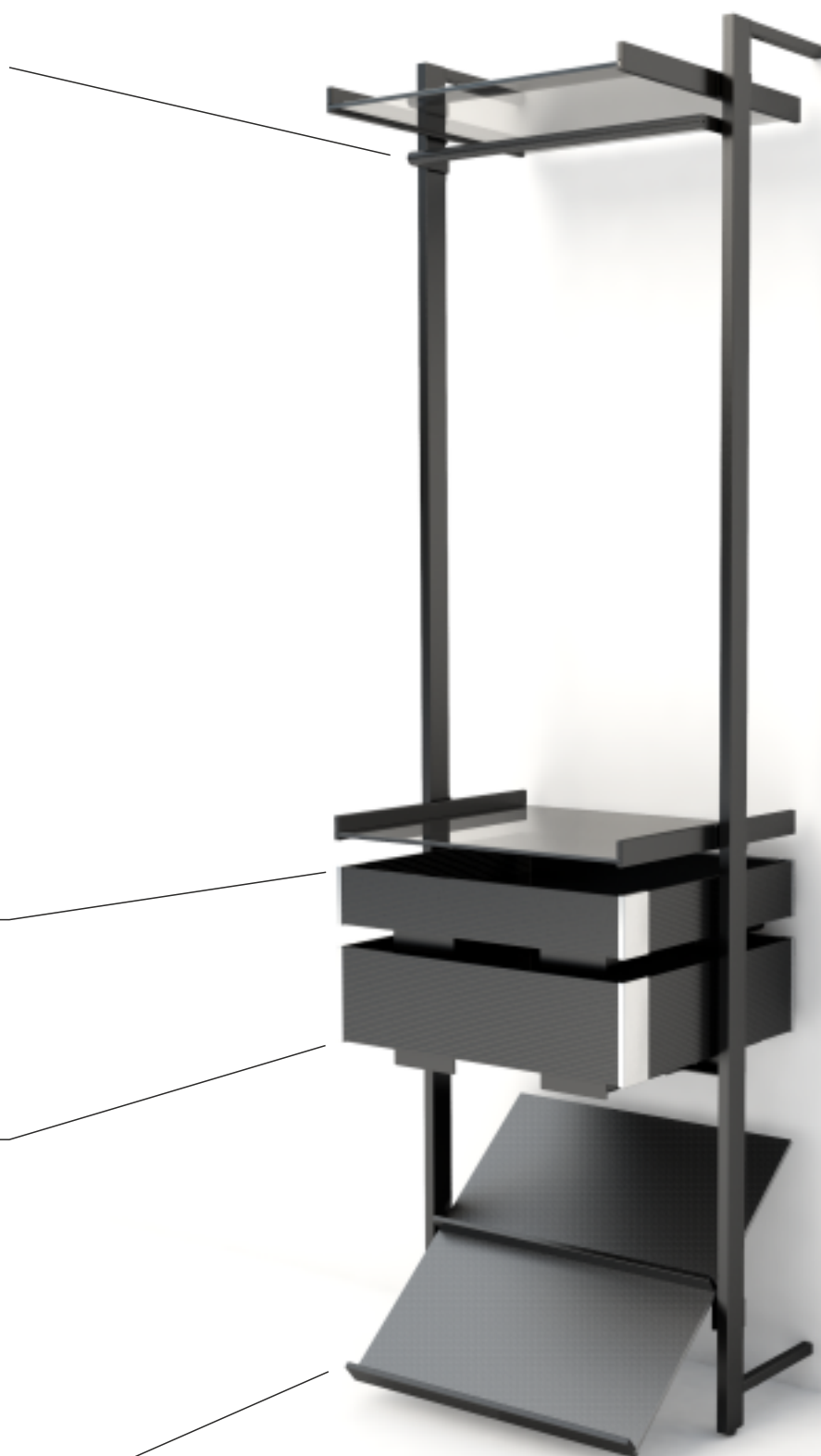
elements' description

hangers' rail - hanging of the longer clothes (coats and jackets) when installed on topmost part of the rack. Alternatively - hanging of the short clothes (shirts) when installed in two rows. This element is fixed only to the poles.

low drawer – storage of small clothes or accessories. Maximal installation height of 100 cm recommended. To be optionally completed with organizers for drawer space dividing. Drawer fixed both to the poles and the wall.

tall drawer – storage of small elements, accessories or folded clothes. Maximal installation height of 100 cm recommended. Drawer fixed both to the poles and the wall.

shoes shelf – comfortable and functional storage of different type of shoes. Two rows storage possible, still with good access to all stored pairs. Recommended installation in the bottom part of the modules.





fixed shelf - an universal element for storing whole range of items: clothing, accessories, bags and packaging. An element with a wide range of adjustment along the rack's height. Fixed only to the rack.

pants hanger - for hanging trousers and hanging clothes. Recommended installation in the middle of the rack's height. Attention have to be paid to keep relevant space above the hanger, so that it is possible to conveniently remove the pants. The element is attached to the frame only.

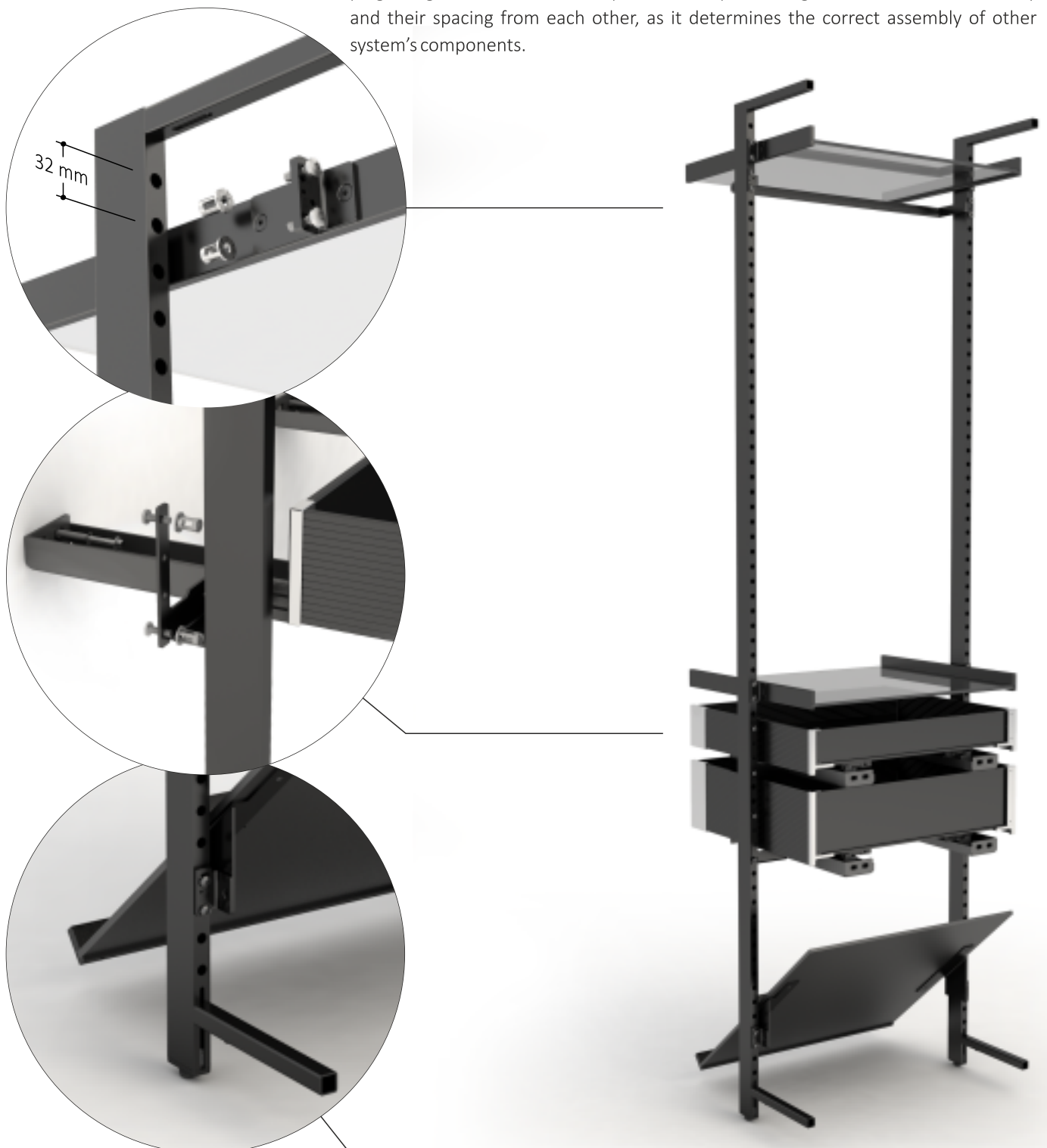
pull-out shelf – same application as a fixed shelf, due to the pull-out mechanism, we do recommend installation at a maximum height of 115 cm. Shelf runners attached to the frame and to the wall.

installation

All items of clothing, except for the pull-out shelves and drawers, are attached to the racks with screws and expansion sleeves from the back of the rack's vertical profile, using holes in the profile.

Drawers and pull-out shelves are attached to the frame profile, but also to the wall, using wall plugs and screws.

The elements of the frame are attached to the wall using the attached screws and wall plugs. Huge attention should be paid to exact positioning of these elements vertically and their spacing from each other, as it determines the correct assembly of other system's components.



During the installation, one can determine the appropriate height to install the elements as well as the gaps between. The height adjustment is done by selecting specific mounting holes out of a row on the back side of the vertical profile.



drawers' decors



sides black mat, corners glossy chrome
.P61-G2



sides black mat, corners black mat
.P61-P61



sides black mat, corners glossy copper
.P61-TL41



sides brushed, corners black mat
.A11-P61

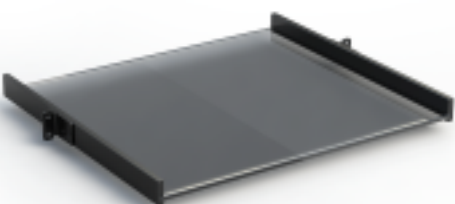


sides graphite glass, corners black mat
.S-P61

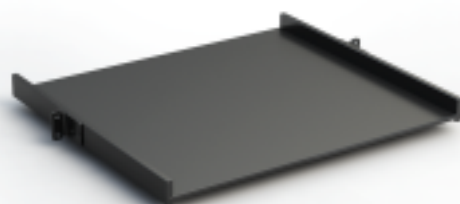


sides graphite glass, corners glossy copper
.S-TL41

shelves' decors



graphite glass, side profiles black mat



laminate, side profiles black mat

overall dimensions

When planning RITMO modules, we took into account the most common architectural modules. Widths 60 and 80 cm. are the base of the most common modular interior pattern. Modules based on these widths will easily fit into any architectural context. The height of the racks should compromise the desire to maximize storage space and human reach resulting from anthropometric dimensions.





module A-01

fixed shelf	2 pcs
hangers' rail	1 pcs
low drawer	1 pcs
tall drawer	1 pcs
shoes shelf	1 pcs



module A-01, width 60 cm	Z-7700-A01-600
module A-01, width 80 cm	Z-7700-A01-800

When ordering this module, please specify the finish of the shelves (glass or laminate) and the finish of the drawers - 6 variants according to the information on page 50. The shoe shelf is only available in the laminate version. An optional organizer can be used for all low drawers.

fixed shelf	3 pcs
hangers' rail	1 pcs
low drawer	1 pcs
tall drawer	1 pcs



module A-02,	width 60 cm	Z-7700-A02-600
module A-02,	width 80 cm	Z-7700-A02-800

When ordering this module, please specify the finish of the shelves (glass or laminate) and the finish of the drawers - 6 variants according to the information on page 50. An optional organizer can be used for all low drawers.

module A-03

fixed shelf
hangers' rail
tall drawer

2 pcs
1 pcs
2 pcs



module A-03, width 60 cm
module A-03, width 80 cm

Z-7700-A03-600
Z-7700-A03-800

When ordering this module, please specify the finish of the shelves (glass or laminate) and the finish of the drawers- 6 variants according to the information on page 50.

fixed shelf (A-04) or fixed shelf compact (A-11)	5 pcs
fixed shelf	1 pcs
tall drawer	2 pcs



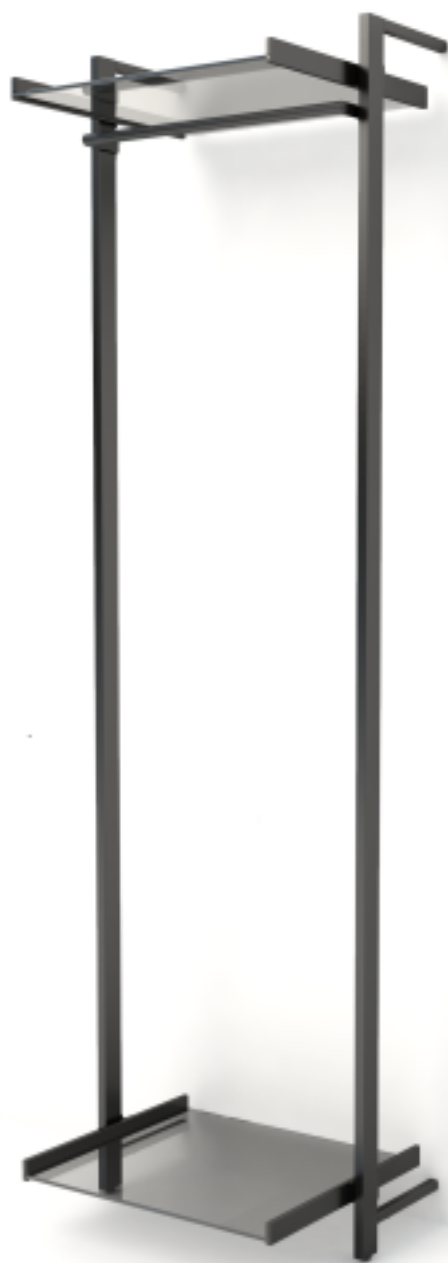
module A-04,	width 60 cm	Z-7700-A04-600
module A-04,	width 80 cm	Z-7700-A04-800
module A-11	width 60 cm, with compact shelves in top part	Z-7700-A11-600
module A-11	width 80 cm, with compact shelves in top part	Z-7700-A11-800

When ordering this module, please specify the finish of the shelves (glass or laminate) and the finish of the drawers - 6 variants according to the information on page 50.

module A-05

fixed shelf
hangers' rail

2 pcs
1 pcs



module A-05, width 60 cm
module A-05, width 80 cm

Z-7700-A05-600
Z-7700-A05-800

When ordering this module, please specify the finish of the shelves (glass or laminate).

fixed shelf
hangers' rail
pants' hanger

2 pcs
1 pcs
1 pcs



module A-06, width 60 cm
module A-06, width 80 cm

Z-7700-A06-600
Z-7700-A06-800

When ordering this module, please specify the finish of the fixed shelf as well as the pull-out one (glass or laminate).

module A-07

fixed shelf	2 pcs
hangers' rail	1 pcs
low drawer	3 pcs
shoes shelf	1 pcs



module A-07,	width 60 cm	Z-7700-A07-600
module A-07,	width 80 cm	Z-7700-A07-800

When ordering this module, please specify the finish of the shelves (glass or laminate) and the finish of the drawers - 6 variants according to the information on page 50. The shoe shelf is only available in the laminate version. An optional organizer can be used for all low drawers.

fixed shelf
low drawer
tall drawer

6 pcs
1 pcs
1 pcs



module A-08, width 60 cm
module A-08, width 80 cm

Z-7700-A08-600
Z-7700-A08-800

When ordering this module, please specify the finish of the shelves (glass or laminate) and the finish of the drawers - 6 variants according to the information on page 50. An optional organizer can be used for all low drawers.

module A-09

fixed shelf
shoes shelf

1 pcs
5 pcs



module A-09, width 60 cm
module A-09, width 80 cm

Z-7700-A09-600
Z-7700-A09-800

When ordering this module, please specify the shelf finish (glass or laminate). The shoes shelves are only laminated.

fixed shelf

8 pcs



module A-010, width 60 cm
module A-010, width 80 cm

Z-7700-A10-600
Z-7700-A10-800

When ordering this module, please specify the finish of the shelves (glass or laminate).

module B-01

fixed shelf	5 pcs
hangers' rail	2 pcs
low drawer	2 pcs
tall drawer	2 pcs
shoes shelf	1 pcs



module B-01,	width 60 cm	Z-7700-B01-600
module B-01,	width 80 cm	Z-7700-B01-800

When ordering this module, please specify the finish of the shelves (glass or laminate) and the finish of the drawers - 6 variants according to the information on page 50. The shoe shelf is only available in the laminate version. An optional organizer can be used for all low drawers.

fixed shelf compact	6 pcs
worktop	2 pcs
low drawer	1 pcs
tall drawer	2 pcs



module B-02,	width 60 cm	Z-7700-B02-600
module B-02,	width 80 cm	Z-7700-B02-800
module B-02,	width 80/60 cm (worktop/container)	Z-7700-B02-600/800

When ordering this module, please specify the finish of the shelves (glass or laminate) and the finish of the drawers - 6 variants according to the information on page 50. An optional organizer can be used for all low drawers. We recommend the layout of dimensions as shown in the picture (module Z-7700-B02-600/800).

module B-03

fixed shelf
hangers' rail
tall drawer

8 pcs
1 pcs
4 pcs



module B-03, width 60 cm
module B-03, width 80 cm

Z-7700-B03-600
Z-7700-B03-800

When ordering this module, please specify the finish of the shelves (glass or laminate) and the finish of the drawers - 6 variants according to the information on page 50.

fixed shelf	4 pcs
hangers' rail	2 pcs
low drawer	1 pcs
tall drawer	1 pcs
pants' hanger	1 pcs
shoes shelf	1 pcs



module B-04,	width 60 cm	Z-7700-B04-600
module B-04,	width 80 cm	Z-7700-B04-800

When ordering this module, please specify the finish of the shelves (glass or laminate) and the finish of the drawers - 6 variants according to the information on page 50. An optional organizer can be used for all low drawers.

module C-01

fixed shelf	10 pcs
hangers' rail	2 pcs
low drawer	1 pcs
tall drawer	1 pcs
pants' hanger	1 pcs



module C-01,	width 60 cm	Z-7700-C01-600
module C-01,	width 80 cm	Z-7700-C01-800

When ordering this module, please specify the finish of the shelves (glass or laminate) and the finish of the drawers - 6 variants according to the information on page 50. An optional organizer can be used for all low drawers.

fixed shelf	10 pcs
hangers' rail	2 pcs
low drawer	2 pcs
tall drawer	2 pcs



module C-02,	width 60 cm	Z-7700-C02-600
module C-02,	width 80 cm	Z-7700-C02-800

When ordering this module, please specify the finish of the shelves (glass or laminate) and the finish of the drawers - 6 variants according to the information on page 50. An optional organizer can be used for all low drawers.



components

Frame pole

single, black mat

Z-7750-1

set (2 pcs.), black mat

Z-7750-2



Rail for hangers

for 60 cm module, black mat

Z-7760-600Ra1

for 80 cm module, black mat

Z-7760-800Ra1



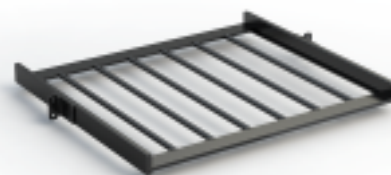
Pants hangers

for 60 cm module, black mat, knurled rods

Z-7761Ra1-600Ra1

for 80 cm module, black mat, knurled rods

Z-7761Ra1-800Ra1



All shelves except the pull-out ones, hangars' rails, pants' hanger and shoes shelves are installed only on the vertical poles

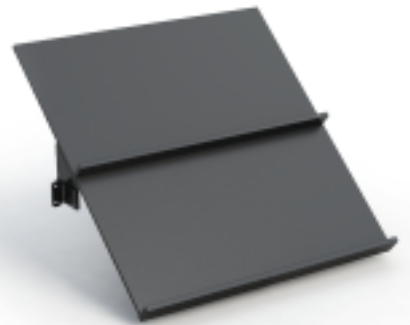
Shoes shelf

for 60 cm module, black mat

Z-7762-600

for 80 cm module, black mat

Z-7762-800



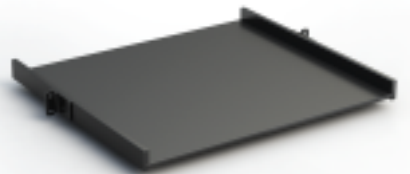
Fixed shelf - laminate

for 60 cm module, black mat

Z-7770-600

for 80 cm module, black mat

Z-7770-800



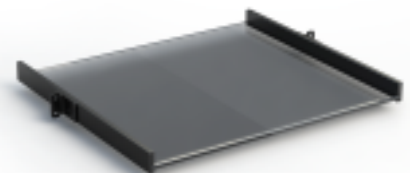
Fixed shelf - glass

for 60 cm module, black mat, shelf - graphite glass

Z-7770S-600

for 80 cm module, black mat, shelf - graphite glass

Z-7770S-800



components

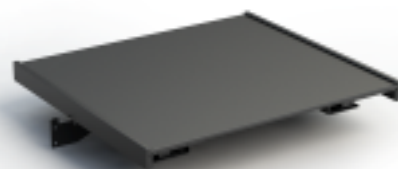
Pull-out shelf - laminate

for 60 cm module, black mat

Z-7773-600

for 80 cm module, black mat

Z-7773-800



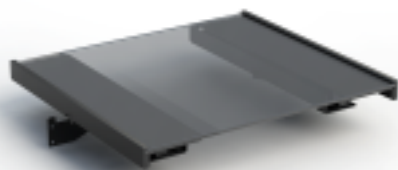
Pull-out shelf - glass

for 60 cm module, black mat, shelf - graphite glass

Z-7773S-600

for 80 cm module, black mat, shelf - graphite glass

Z-7773S-800



Low drawer - aluminium sides

for 60 cm module, sides black mat, corners chrome glossy

Z-7780-600.P61-G2

for 60 cm module, sides black mat, corners black mat

Z-7780-600.P61-P61

for 60 cm module, sides black mat, corners copper glossy

Z-7780-600.P61-TL41

for 60 cm module, sides brushed, corners black mat

Z-7780-600.A11-P61

for 80 cm module, sides black mat, corners chrome glossy

Z-7780-800.P61-G2

for 80 cm module, sides black mat, corners black mat

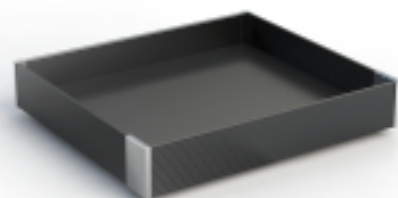
Z-7780-800.P61-G2

for 80 cm module, sides black mat, corners copper glossy

Z-7780-800.P61-TL41

for 80 cm module, sides brushed, corners black mat

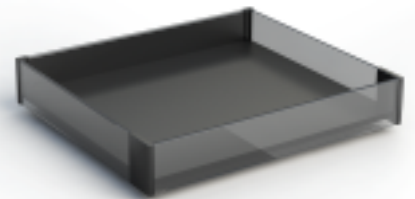
Z-7780-800.A11-P61



All the pull-out elements of the RITMO system work on the highest quality Grass drawer runners, equipped with a soft closing system. The permissible load of these elements is 20 kg.

Low drawer - glass sides

for 60 cm module, sides graphite glass, corners black mat	Z-7780S-600.S-P61
for 60 cm module, sides graphite glass, corners miedź polysk	Z-7780S-600.S-TL41
for 80 cm module, sides graphite glass, corners black mat	Z-7780S-800.S-P61
for 80 cm module, sides graphite glass, corners miedź polysk	Z-7780S-800.S-TL41



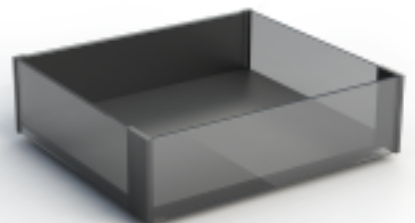
Tall drawer - aluminium sides

for 60 cm module, sides black mat, corners chrome glossy	Z-7781-600.P61-G2
for 60 cm module, sides black mat, corners black mat	Z-7781-600.P61-P61
for 60 cm module, sides black mat, corners copper glossy	Z-7781-600.P61-TL41
for 60 cm module, sides brushed, corners black mat	Z-7781-600.A11-P61
for 80 cm module, sides black mat, corners chrome glossy	Z-7781-800.P61-G2
for 80 cm module, sides black mat, corners black mat	Z-7781-800.P61-P61
for 80 cm module, sides black mat, corners copper glossy	Z-7781-800.P61-TL41
for 80 cm module, sides brushed, corners black mat	Z-7781-800.A11-P61



Tall drawer - glass sides

for 60 cm module, sides graphite glass, corners black mat	Z-7781S-600.S-P61
for 60 cm module, sides graphite glass, corners copper glossy	Z-7781S-600.S-TL41
for 80 cm module, sides graphite glass, corners black mat	Z-7781S-800.S-P61
for 80 cm module, sides graphite glass, corners copper glossy	Z-7781S-800.S-TL41



components

Fixed shelf compact - laminate

for 60 cm module, black mat

Z-7771-600

for 80 cm module, black mat

Z-7771-800



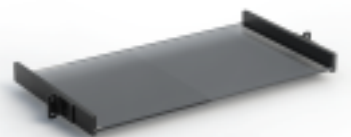
Fixed shelf compact - glass

for 60 cm module, black mat, graphite glass

Z-7771S-600

for 80 cm module, black mat, graphite glass

Z-7771S-800



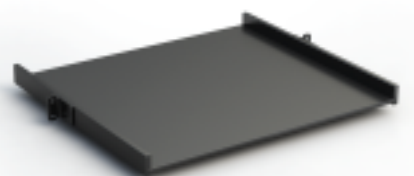
Worktop - laminate

for 60 cm module, black mat

Z-7772-600

for 80 cm module, black mat

Z-7772-800



We do recommend to install shelf in compact sizes for both home office and dayroom arrangement proposals

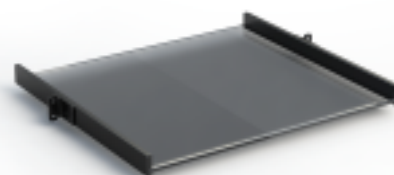
Worktop - glass

for 60 cm module, black mat, graphite glass

Z-7772S-600

for 80 cm module, black mat, graphite glass

Z-7772S-800



Low drawer organizer

for 60 cm module drawers, black velvet


Z-7751-600


for 80 cm module drawers, black velvet

Z-7751-800



www.nomet.pl

 @inspiracjenomet

 @nometpoland



